

Surface Roughness Tester

C1	Surface Roughness Tester TIME®3100	P22
C2	Surface Roughness Tester TIME®3110	P23
C3	Surface Roughness Tester TIME®3200/3202	P24
C4	Surface Roughness Tester TIME®3210	P27
C5	Surface Roughness Tester TIME®3220	P28
C6	Surface Roughness Tester TIME®3221	P29
C7	Surface Roughness Tester TIME®3223	P30
C8	Surface Form Tester TIME®3230	P32
C9	Surface Roughness Tester TIME®3231	P33
C10	Surface Roughness Tester TIME®3233	P34
C11	TA620/TA630/TA631/TA650	P38



Features

- Pocket-size unit with artistic design, easy and convenient to use
- Two OLED dot matrix indicators: one on the front display and the other on top cover display
- Calibration function
- Battery indicator with alarm when in low battery

TIME® 3100

SURFACE ROUGHNESS TESTER

Standard Delivery

- Main unit
- Specimen Ra
- Charger
- TIME certificate
- Warranty card
- Instruction manual

Technical Specification

Roughness parameter	Ra, Rz
Measuring range(μm)	Ra: 0.05-6.5 Rz: 0.1-50
Cut-off lengths(mm)	0.25, 0.8, 2.5
Evaluation lengths(mm)	1.25, 4.0, 5.0
Tolerance	±15%
Repeatability	< 12%
Power	3.7 V Li battery
Operating temperature:	0~40°C
Humidity:	< 90%
Dimension (mm)	116 x 86 x 30
Weight (g)	200

TIME[®]3110

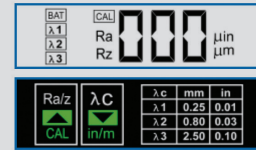
SURFACE ROUGHNESS TESTER

Standard Delivery

- Main unit 1
- Specimen Ra 1
- Charger 1
- TIME certificate 1
- Warranty card 1
- Instruction manual 1

Optional Accessory

- Various Ra specimen with Ra values: 0.1μm, 0.2μm, 0.4μm, 0.8μm, 3.2μm



Features

- Pocket-size unit with economical price, widely used in production lines, workshops and labs.
- Wide measuring range suitable for most materials, and applicable for flat, outer cylinder and sloping surface
- Rugged design device with a long lifetime, while keeping the accurate and reliable data results
- Both Ra and Rz measurement range
- All calculated measurement results shown on its LCD back-lit display hardly after tested
- Indicator and alarm for low battery, out-of-limit values and dysfunction
- Chargeable Li battery and improvement of the circuits function.
- Improvement and Protection for sensor to secure the high accuracy and good stability.
- Conforms to ISO and DIN



Technical Specification

Model	TIME [®] 3110
Roughness parameter	Ra, Rz
Tracing length	6mm
Tracing speed	1.0mm/sec
Cut-off lengths	0.25mm/0.8mm/2.5mm
Evaluation length	1.25mm/4.0mm/5.0mm
Measuring range	Ra: 0.05-10.0μm Rz: 0.1-50μm
Accuracy	±15%
Repeatability	<12%
Filter	RC analogue
Pick-up	Piezoelectric
Radius and angle of the stylus point	Diamond, Radius : 10±2.5μm Angle: 90°(+5°or -10°)
Operating temperature	0~40°C
Humidity	<80%
Storing temperature	-25°C ~ 60°C
Power	3.6V Li-ion battery
Charger	DC6V, 3 hours (charging time)
Dimension (mm)	110×70×24
Weight (g)	160

TIME[®] 3200/3202

SURFACE ROUGHNESS TESTER

Standard Delivery

● Main unit	1	● Steel support	1
● TS100 standard pickup	1	● Dataview	1
● Roughness test plate Ra	1	● Communication cable	1
● Charger	1	● TIME certificate	1
● Protection nose	1	● Warranty card	1
		● Instruction manual	1

Optional Accessory

- TS110 pickup for curved surface
- TS120 pickup for small holes
- TS130 pickup for deep grooves
- TS140 right-angled pickup
- Measuring platform TA620
- Leveling table TA630/TA631
- Magnetic stand
- Steel adapter (Φ8)
- Steel adapter (L-attachment)
- Printer TA230

Features

- Over dozen measurement parameters applicable for roughness test of various mechanical manufacturing processes in production lines, workshops and labs.
- High accuracy inductive pickup
- Easy operation manual and large LCD display with backlight.
- Pickup stylus position indicator.
- Transfer to PC via RS232 with advanced PC Software TIMESurf for more analyzing management.
- Connected with printer to print the data and graphs on-site.
- Storage and review function for up to 15 groups data and graphs.
- Rk data and graphic are available.
- Digital filter: RC, PC-RC, Gauss, D-P
- Optional delicate accessories for more accurate results and easier operation eg. measuring platform, steel support and so on
- Conform to ISO standard, compatible with DIN, ANSI and JIS standard.
- Top quality Li-ion rechargeable battery.



Technical Specification

Model	TIME [®] 3200	TIME [®] 3202
Roughness parameters	Ra, Rz, Ry, Rq, Rt, Rp, Rmax, Rv, R3z, RS, RSm, RSk, Rmr,	Ra, Rz, Ry, Rq, Rt, Rp, Rmax, Rv, R3z, RS, RSm, RSk, Rmr, Rpc, Rk, Rpk, Rvk, Mr1, Mr2
Assessed profiles	Roughness profile (R)	
	Primary profile (P)	Primary profile (P)
Measuring system	Metric, imperial	
Display resolution	0.001 µ m	
Data output	RS232	
Pickup measuring range	±20µ m, ±40µ m, ±80µ m	
Cutoff length (L)	0.25mm / 0.8mm / 2.5mm/Auto	
Evaluation length	1~5L (selectable)	1~5L (selectable)
Tracing length	3-7L(selectable)	3-7L(selectable)
Digital filter	RC, PC-RC, Gauss, D-P	
Max. tracing length	17.5mm/0.71inch	
Min. tracing length	1.3mm/0.052inch	
Pick-up	Standard pickup TS100, inductive, diamond stylus radius 5µm, angle of stylus 90°	
Accuracy	≤±10%	
Repeatability	≤6%	
Power	Li-ion battery rechargeable	
Dimensions (mm)	140×52×48	
Weight (g)	440	440

System Diagram



Pickups Optionals



TS100 standard pickup
With skid for roughness test on plane surface, shaft and inner surface of holes with max. depth of 22mm, min diameter 5mm



TS110 pickup for curved surface
Used for roughness testing of curved surface with min curvature radius 3mm, working with measuring platform TA620



TS120 pickup for small holes
Used for roughness testing of small holes with min. 2mm diameter of inner surface, max. depth 9mm



TS140 right-angled pickup
Comprising right-angled pickup and right-angled transmit rod, used for roughness testing of groove and crank with min. width 7.5mm~20mm, and of steps with max. height 2.5mm, working with TA620

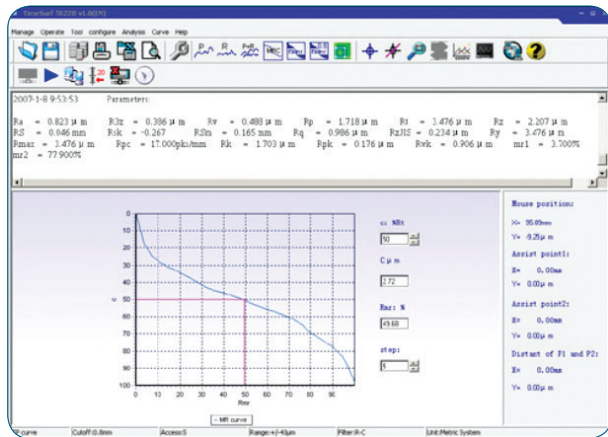
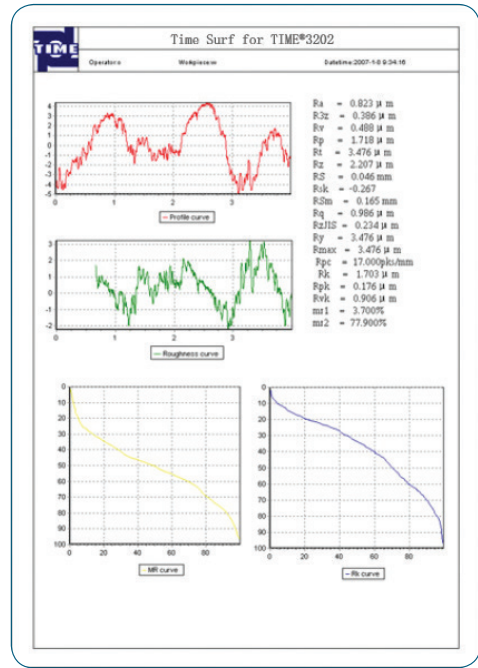
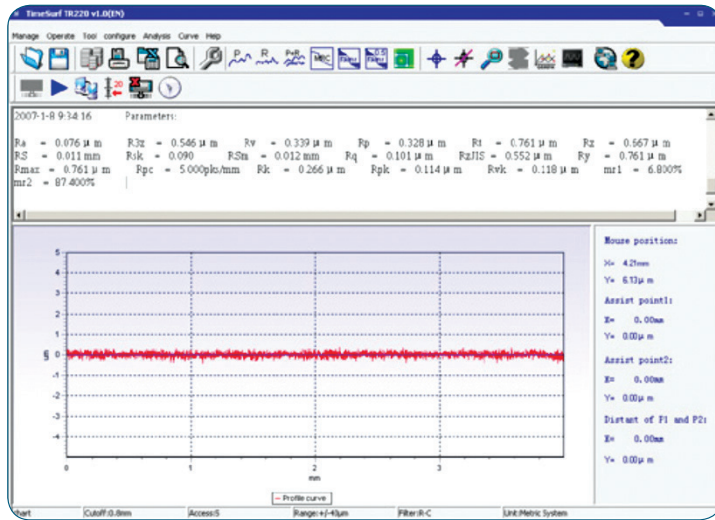


TS130/131 pickup for deep grooves

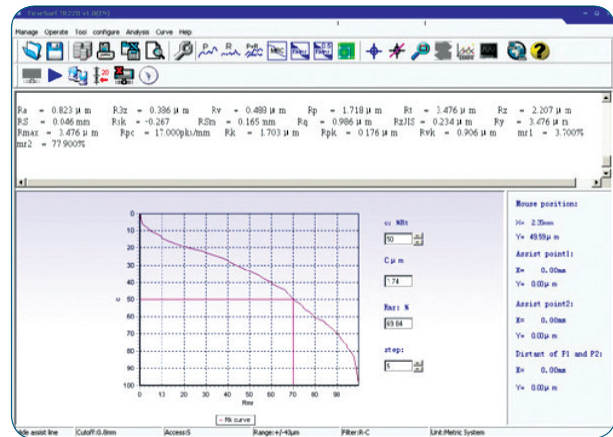
TS130: Used for roughness testing of deep groove with min. width 2mm, max. depth 3mm or of step with max. height 3mm,
TS131: Used for roughness testing of deep groove with min. width 3mm, max. depth 10mm or of step with max. height 10mm, working with measuring platform TA620.

TIMESurf for TIME®3200/3202

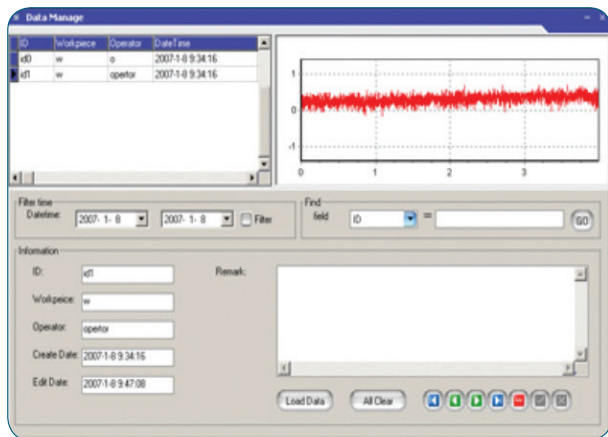
Software works for TIME advanced surface roughness tester TIME®3200/3202 managing, analyzing, printing and searching measured data and graphs



MR curve



RK curve



Database management

Online measurement form:

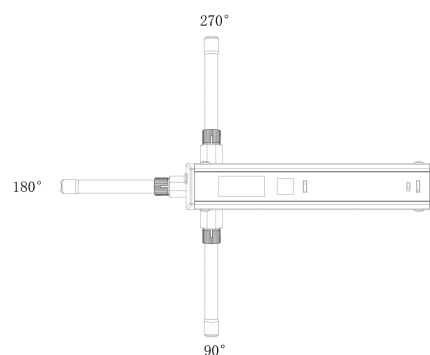
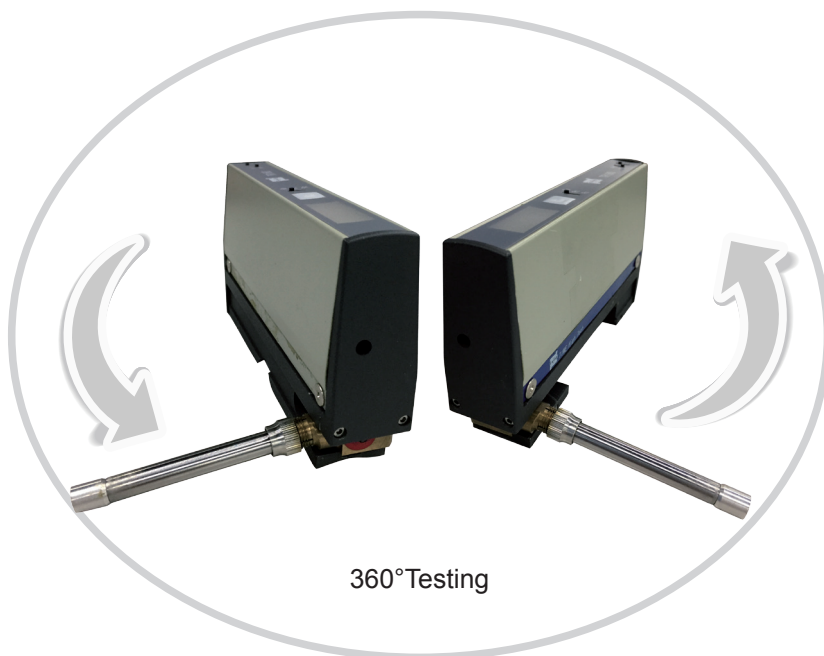
- Sample interval time: min
- Operator:
- Workpiece:
- Sample times: times
- State:

Buttons: Start, Cancel

Online measurement

TIME[®] 3210

SURFACE ROUGHNESS TESTER



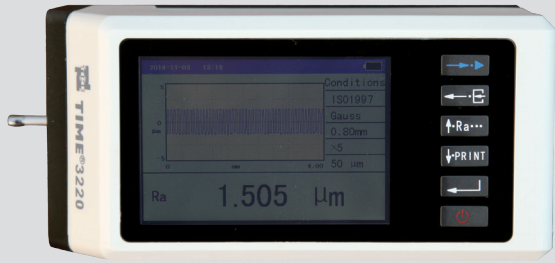
Pickup testing at 90° , 180° and 270°

Features

- Pocket-size unit with economical price, widely used in production lines, workshops and labs
- Wide measuring range suitable for most materials, and applicable for both inside and outside cylinder
- Rugged design device with a long lifetime, while keeping the accurate and reliable data results
- Measurement and conversion among Ra, Rt and Rz
- All calculated measurement results shown on its LCD back-lit display hardly after tested
- Measuring Direction: any direction 360°
- Indicator and alarm for low battery, out-of-limit values and dysfunction
- Chargeable Li battery and improvement of the circuits function
- Improvement and protection for sensor to secure the high accuracy and good stability.
- Data transfer function and calibration function.

Technical Specification

Measuring Range	Ra: 0.03 μ m~6.35 μ m
	Rt: 0.2 μ m~25.3 μ m
	Rz: 0.2 μ m~25.3 μ m
Accuracy	$\leq \pm 15\%$
Repeatability	$\leq 12\%$
Display resolution	0.01 μ m
Cutoff Length (L)	0.8mm (Filter: RC Filter)
Evaluation length	1L,3L,5L(selectable)
Driver speed	3mm/s
Display	LCD, 3 digital
Interface	RS232
Power	9V alkaline battery
Pickup	Inductive
The max.testing force of pickup	<16mN
Operating temperature	0°C ~ 40°C
Storage temperature	-20°C ~ 65°C



Features

- Integrated design, easy and convenient to use
- Over dozen measurement parameters: Ra,Rp,Rv,Rt,Rz,Rq,Rsk,Rku,Rc,RPc,RSm,Rmr(c),tp, Rmr,Rpm,Rz1max,RzJIS,Rmax,Htp,Rδc,R△q,R△a,Pa,Pp,Pv,Pt,Pz,Pq,Psk,Pku,Pc,PSm,Pmr(c),Pmr,Pz1max,PzJIS, Pδc,P△q,Rk,Rpk,Rvk,Mr1,Mr2,A1,A2
- Touch screen with TFT LCD showing all important data and graphs
- High accuracy inductive sensor probe
- Filtering methods of 2RC, GAUSS
- Compatible with standards of ISO1997, ANSI and JIS2001
- Connected to TIME TA230 printer to print all data and graphs
- RS232 interface and USB interface meeting more needs
- Auto switch off

TIME®3220

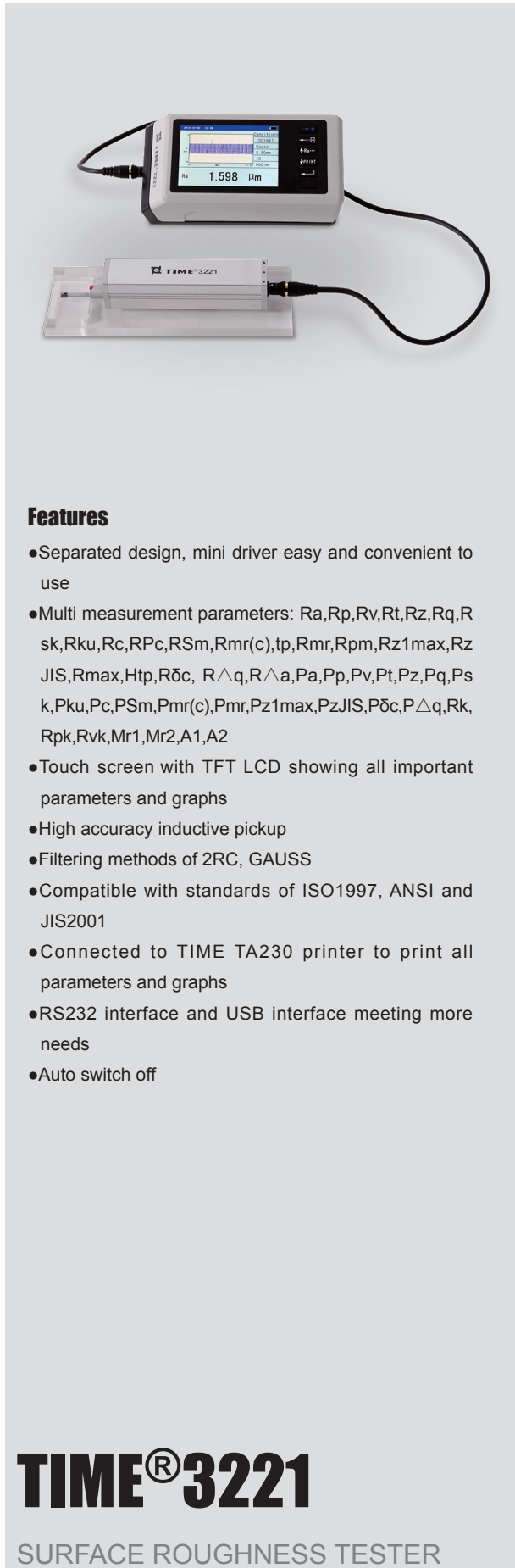
SURFACE ROUGHNESS TESTER

Standard Delivery

- Main unit 1
- Standard pickup 1
- Standard sample 1
- Power adapter 1
- Communication cable 1
- Protection sleeve 1
- TIME certificate 1
- Warranty card 1
- Instruction manual 1

Technical Specification

Pickup		
Test principle	Inductance type	
Measurement range	400μm	
Stylus tip radius	5μm/2μm	
Stylus tip material	Diamond	
Measuring force	4mN/0.75 mN	
Stylus tip angle	90°/60°	
Radius of skid curvature	45mm	
Maximum drive range	19mm/0.748inch	
Traversing speed	Measuring: Cut off length = 0.08 mm Vt=0.25 mm/s Cut off length = 0.25 mm Vt=0.25mm/s Cut off length = 0.8 mm Vt=0.5 mm/s Cut off length = 2.5mm Vt=1mm/s Returning V=1mm/s	
Accuracy	Less than or equal to ±10%	
Repeatability	≤6%	
Cut-off length	0.08mm,0.25mm,0.8mm,2.5mm, selectable	
Evaluation length	(1~5)L selectable	
Measuring rang and resolution	Measuring range	Resolution
	Automatic	0.001μm,0.008μm
	±50μm	0.001μm
	±200μm	0.008μm
Power	Built-in Li battery	
Power adapter	Input: 100 V~240VAC,50/60Hz Output: 9V,3A	
Working environment	Temperature: 0°C~40°C Humidity: < 90% RH	
Dimensions (mm)	155.4×75×53	
Weight (g)	580	



Features

- Separated design, mini driver easy and convenient to use
- Multi measurement parameters: Ra,Rp,Rv,Rt,Rz,Rq,Rsk,Rku,Rc,RPc,RSm,Rmr(c),tp,Rmr,Rpm,Rz1max,RzJIS,Rmax,Htp,Rδc, RΔq,RΔa,Pa,Pp,Pv,Pt,Pz,Pq,Ps k,Pku,Pc,PSm,Pmr(c),Pmr,Pz1max,PzJIS,Pδc,PΔq,Rk,Rpk,Rvk,Mr1,Mr2,A1,A2
- Touch screen with TFT LCD showing all important parameters and graphs
- High accuracy inductive pickup
- Filtering methods of 2RC, GAUSS
- Compatible with standards of ISO1997, ANSI and JIS2001
- Connected to TIME TA230 printer to print all parameters and graphs
- RS232 interface and USB interface meeting more needs
- Auto switch off

TIME® 3221

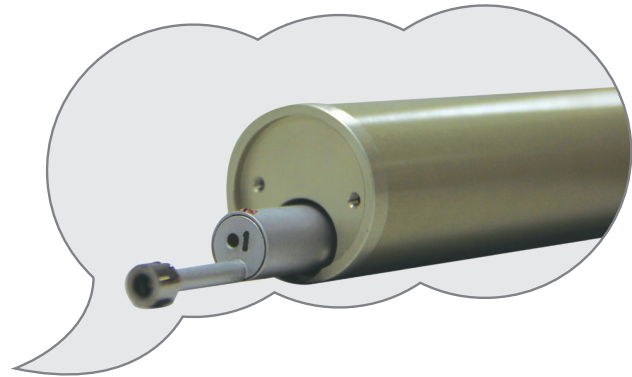
SURFACE ROUGHNESS TESTER

Standard Delivery

- Main unit 1
- Standard pickup 1
- Standard sample 1
- Power adapter 1
- Communication cable 1
- Protection sleeve 1
- Adapter 1
- Magnetic base 1
- TIME certificate 1
- Warranty card 1
- Instruction manual 1

Technical specification

Pickup		
Test principle	Inductance type	
Measurement range	400μm	
Stylus tip radius	5μm/2μm	
Stylus tip material	Diamond	
Measuring force	4mN/0.75 mN	
Stylus tip angle	90°/60°	
Radius of skid curvature	45mm	
Maximum drive range	19mm/0.748inch	
Traversing speed	Measuring: Cut off length = 0.08 mm Vt=0.25 mm/s Cut off length = 0.25 mm Vt=0.25mm/s Cut off length = 0.8 mm Vt=0.5 mm/s Cut off length = 2.5mm Vt=1mm/s Returning V=1mm/s	
Accuracy	Less than or equal to ±10%	
Repeatability	≤6%	
Cut-off length	0.08mm,0.25mm,0.8mm,2.5mm, selectable	
Evaluation length	(1~5)L selectable	
Measuring rang and resolution	Measuring range	Resolution
	Automatic	0.001μm,0.008μm
	±50μm	0.001μm
	±200μm	0.008μm
Power	Built-in Li battery	
Power adapter	Input: 100 V~240VAC,50/60Hz Output: 9V,3A	
Working environment	Temperature: 0°C~40°C Humidity: < 90% RH	
Dimensions (mm)	155.4×75×53	
Weight (g)	580	



Features

- Separated design, mini driver easy and convenient to use
- Over dozen measurement parameters: Ra, Rp, Rv, Rt, Rz, Rq, Rsk, Rku, Rc, R_{Pc}, R_{Sm}, R_{mr(c)}, t_p, R_{mr}, R_{pm}, R_{z1max}, R_{zJIS}, R_{max}, H_{tp}, R_{δc}, R_{Δq}, R_{Δa}, R_k, R_{pk}, R_{vk}, Mr1, Mr2, A1, A2, Pa, Pp, Pv, Pt, Pz, Pq, Psk, Pku, Pc, P_{Sm}, P_{mr(c)}, P_{mr}, P_{z1max}, P_{zJIS}, P_{δc}, P_{Δq}
- Touch screen with TFT LCD showing all important parameters and graphs
- High accuracy inductive pickup
- Filtering methods of 2RC, GAUSS
- Compatible with standards of ISO1997, ANSI and JIS2001
- Connected to TIME TA230 printer to print all parameters and graphs
- RS232 interface and USB interface meeting more needs
- Auto or manual switch off

Optional Accessory

- Printer TA230
- Connecting cable
- Dataview

TIME[®]3223

SURFACE ROUGHNESS TESTER

Standard Delivery

• Main unit	1
• Standard pickup	1
• Driver	1
• Charger	1
• Standard sample	1
• Protection sleeve	2
• Feeler lever	4
• TIME certificate	1
• Warranty card	1
• Instruction manual	1

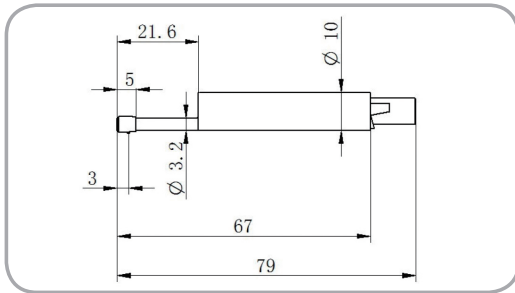
Technical specification

Pick up	Test principle	Inductance type
	Measuring range	400 μm
	Stylus tip radius	5 μm
	Stylus tip material	Diamond
	Measuring force	4 mN
	Stylus tip angle	90°
	Radius of skid curvature	45 mm
	Maximum drive range	19 mm
Measuring range and resolution	Measuring range	Resolution
	±25 μm	0.001 μm
	±200 μm	0.008 μm
Cut-off length	0.08 m, 0.25 mm, 0.8 mm, 2.5 mm	
Evaluation length	1L-5L (selectable)	
Accuracy	±10%	

Pickup for TIME[®] 322X

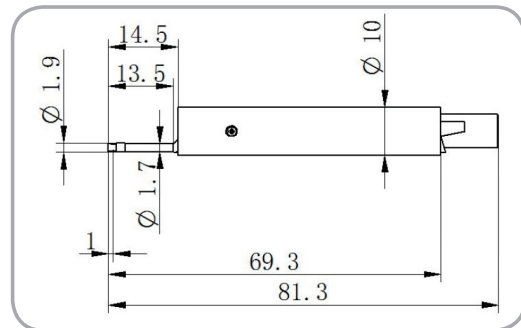
TIME S201 (standard)

Radius for needle point: 5μm
 Angle for needle: 90°
 Force for needle: 4mN
 Measuring range: 400μm



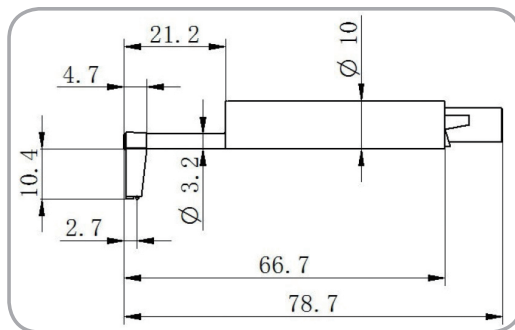
TIME S211 for small hole

Radius for needle point: 5μm
 Angle for needle: 90°
 Force for needle: 4mN
 Measuring range: 100μm
 Min. diameter of hole: ø2mm
 Max. depth of hole: 13.5mm



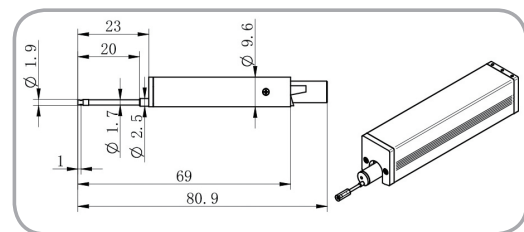
TIME S212 for deep groove

Radius for needle point: 5μm
 Angle for needle: 90°
 Force for needle: 4mN
 Measuring range: 400μm
 Min. width of groove: 2.5mm
 Max. depth of groove: 10mm



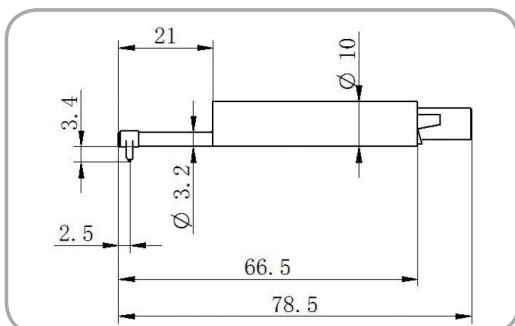
TIME S213 pick up for deep hole

Radius for needle point: 5μm
 Angle for needle: 90°
 Force for needle: 4mN
 Measuring range: 400μm
 Min. width of hole: ø2mm
 Max. depth of hole: 20mm



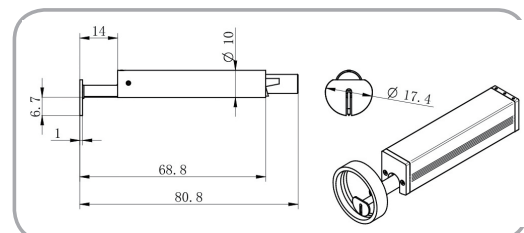
TIME S214 for curved surface

Radius for needle point: 5μm
 Angle for needle: 90°
 Force for needle: 4mN
 Measuring range: 200μm



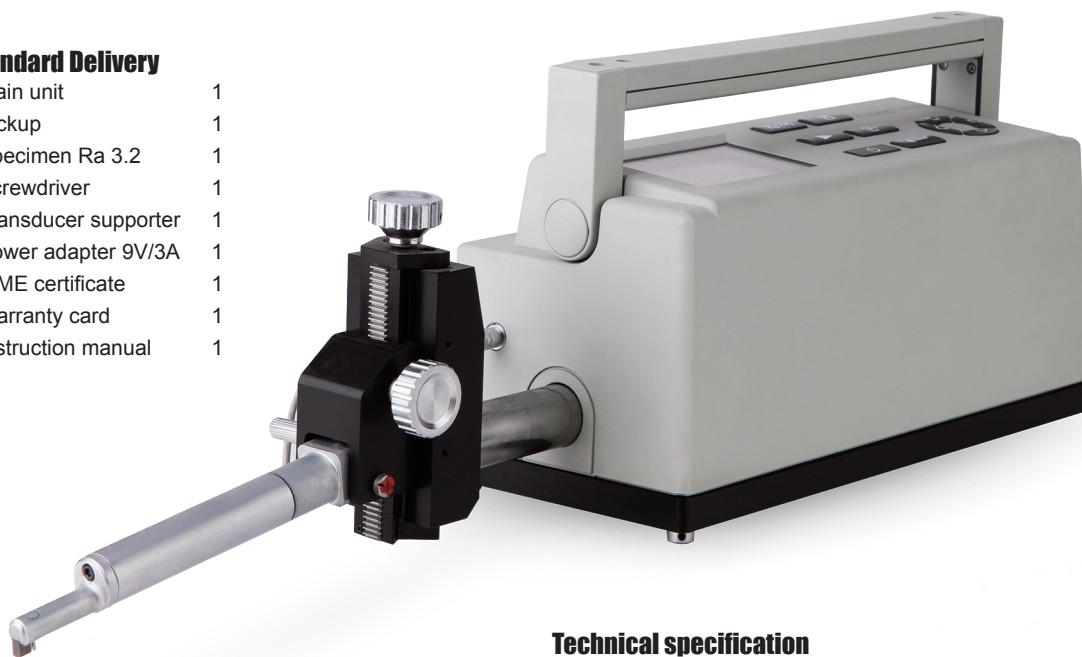
TIME S220 "O" type pick up

Radius for needle point: 5μm
 Angle for needle: 90°
 Force for needle: 4mN
 Measuring range: 200μm
 Thickness of lead head: 1mm



Standard Delivery

- Main unit 1
- Pickup 1
- Specimen Ra 3.2 1
- Screwdriver 1
- Transducer supporter 1
- Power adapter 9V/3A 1
- TIME certificate 1
- Warranty card 1
- Instruction manual 1



Features

- Integrated design, easy and convenient to use
- 55 kinds of measurement parameters conform to ISO/DIN/ ANSI/JIS standards for your convenience. High accuracy in the roughness, waviness and primary profile testing of various parts.
- LCD displays digital and graphic information
- Numerous optional sensors to approach even the most inaccessible places
- Transfer to PC via RS232 with advanced PC Software TIMESurf for more analyzing management, and data can be stored in Excel file.
- Printer can be connected to print the digital and graphic information
- Wide measurement range with the Accuracy 5% and Repeatability 3%

Optional Accessory

- Printer TA230
- PC software (TIMESurf for TIME®3230)
- RS232 communication cable

TIME® 3230

SURFACE FORM TESTER

Technical specification

Assessed profile	R (Roughness), W (Waviness), P (Primary profile)
Measuring range	±400µm, ±25µm
Filtering	RC,PCRC,Gauss,D-P,ISO 13565
Parameters	R: Ra,Rp,Rv,Rt,Rz,Rq,Rsk,Rku,Rc,RS,RSm, Rlo,RHSC,Rpc,Rmr(c),RzJIS,R3y,R3z W: Wa,Wp,Wv,Wt,Wz,Wq,Wsk,Wku,Wc,WS, WSm, Wlo,WHSC,Wpc,Wmr(c),WzJIS P: Pa,Pp,Pv,Pt,Pz,Pq,Psk,Pku,Pc,PS,PSm, Plo,PHSC,Ppc,Pmr(c),PzJIS Rk: Rk,Rpk,Rvk,Mr1,Mr2
Cut-off length	0.08mm,0.25mm,0.8mm,2.5mm,8mm
Max. tracing length	40mm
Analysis graphs	ADC, BAC
Evaluation length	1L-5L
Resolution	0.001µm/50µm; 0.016µm/800µm
Tolerance	±5%
Display	LCD
Memory	10 groups of primary data
Data output	RS232,USB
Power supply	Li battery / AC adapter
Dimensions (mm)	409×96×98
Weight (g)	2300



Features

- Integrated design, easy and convenient to use, especially for narrow space down to 1.5mm
- 55 kinds of measurement parameters conform to ISO/DIN/ ANSI/JIS standards for your convenience
- Rectangular driver for 90 angle measurements, even without lead
- High accuracy in the surface roughness, waviness and primary profile testing.
- LCD displays digital and graphic information
- Numerous optional sensors to approach even the most inaccessible places, with or without leads
- Transfer to PC via RS232 with advanced PC Software TIMESurf for more analyzing management, and data can be stored in Excel file.
- Printer can be connected to print the digital and graphic information
- Wide measurement range up to 800 um, with the Accuracy 5 % and Repeatability 3%

Optional Accessory

- Printer TA230
- PC software (TIMESurf for TIME®3230)
- RS232 communication cable

TIME® 3231

SURFACE FORM TESTER

Technical specification

Assessed profile	R (Roughness), W (Waviness), P (Primary profile)
Measuring range	±400μm, ±25μm
Filtering	RC,PCRC,Gauss,D-P,ISO 13565
Parameters	R: Ra,Rp,Rv,Rt,Rz,Rq,Rsk,Rku,Rc,RS,RSm, Rlo,RHSC,Rpc,Rmr(c),RzJIS,R3y,R3z W: Wa,Wp,Wv,Wt,Wz,Wq,Wsk,Wku,Wc,WS, WSm, Wlo,WHSC,Wpc,Wmr(c),WzJIS P: Pa,Pp,Pv,Pt,Pz,Pq,Psk,Pku,Pc,PS,PSm, Plo,PHSC,Ppc,Pmr(c),PzJIS Rk: Rk,Rpk,Rvk,Mr1,Mr2
Cut-off length	0.08mm,0.25mm,0.8mm,2.5mm,8mm
Max. tracing length	40mm
Analysis graphs	ADC, BAC
Evaluation length	1L-5L
Resolution	0.001μm/50μm: 0.016μm/800μm
Tolerance	±5%
Display	LCD
Memory	10 groups of primary data
Data output	RS232,USB
Power supply	Li battery / AC adapter
Dimensions (mm)	409×96×98
Weight (g)	2300



Features

- Integrated design, easy and convenient to use, especially for narrow spaces down to 1.5mm
- 55 kinds of measurement parameters conform to ISO/DIN/ANSI/JIS standards for your convenience
- Rectangular driver for 90 angle measurements, even without lead.
- High accuracy in the surface roughness, waviness and primary profile testing.
- LCD displays digital and graphic information
- Numerous optional sensors to approach even the most inaccessible places, with or without leads
- Transfer to PC via RS232 with advanced PC Software TIMESurf for more analyzing management, and data can be stored in Excel file.
- Printer can be connected to print the digital and graphic information
- Wide measurement range up to 800 μm, with the Accuracy 5 % and Repeatability 3%
- Adjust angle and lifting height by your choice.
- Full length waving testing with the maximum tracing length up to 50 mm.

Optional Accessory

- Printer TA230
- PC software (TIMESurf for TIME®3230)
- RS232 communication cable

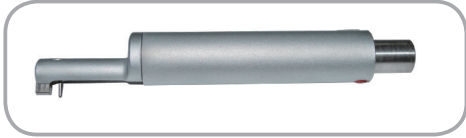
TIME® 3233

SURFACE FORM TESTER

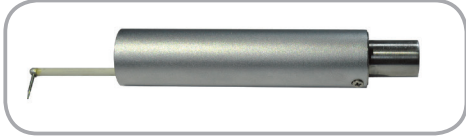
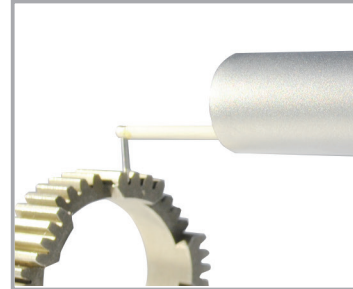
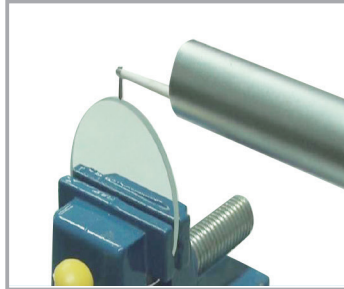
Technical specification

Assessed profile	R (Roughness), W (Waviness), P (Primary profile)
Measuring range	±400μm, ±25μm
Filtering	RC, PCRC, Gauss, D-P, ISO 13565
Parameters	R: Ra, Rp, Rv, Rt, Rz, Rq, Rsk, Rku, Rc, RS, RSm, Rlo, RHSC, Rpc, Rmr(c), RzJIS, R3y, R3z W: Wa, Wp, Wv, Wt, Wz, Wq, Wsk, Wku, Wc, WS, WSm, Wlo, WHSC, Wpc, Wmr(c), WzJIS P: Pa, Pp, Pv, Pt, Pz, Pq, Psk, Pku, Pc, PS, PSm, Plo, PHSC, Ppc, Pmr(c), PzJIS Rk: Rk, Rpk, Rvk, Mr1, Mr2
Cut-off length	0.08mm, 0.25mm, 0.8mm, 2.5mm, 8mm, 10mm
Max. tracing length	50mm
Analysis graphs	ADC, BAC
Evaluation length	1L-5L
Resolution	0.001μm/50μm; 0.016μm/800μm
Tolerance	±5%
Display	LCD
Memory	10 groups of primary data
Data output	RS232, USB
Power supply	Li battery / AC adapter
Dimensions (mm)	409×96×98
Weight (g)	2300

Pickup for TIME[®] 323X



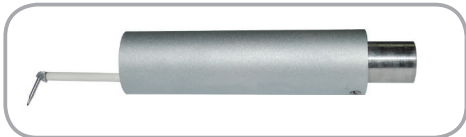
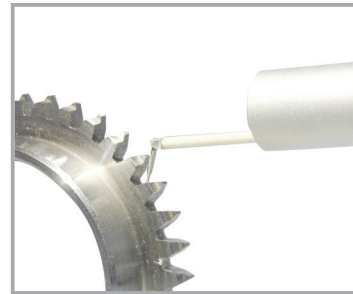
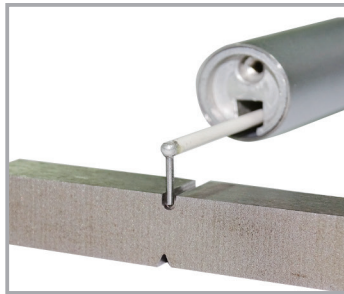
TIME 3230 standard pickup



TIME S230V pickup (7mm changeable diameter)



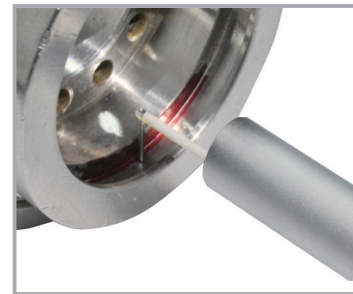
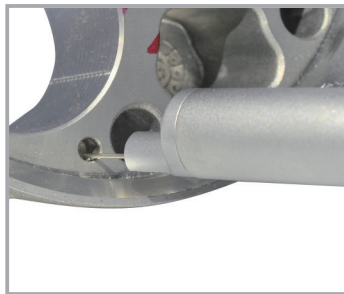
TIME S230U pickup (7mm)



TIME S231 pickup for tooth surface (120° probe)



TIME S232 pickup for small hole (ø1.33)



TIME S233 pickup for deep groove (10mm)

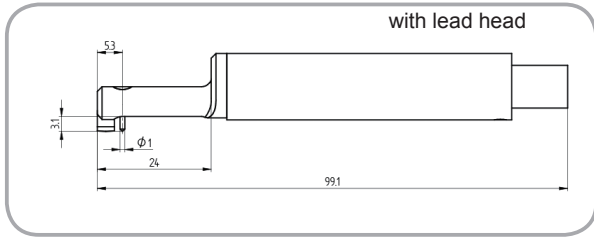


TIME S236 pickup for extra deep groove (20mm)

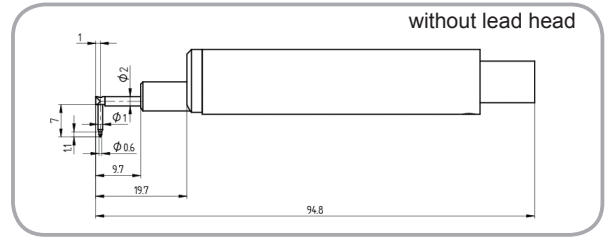


TIME S238 pickup for super deep groove (30mm)

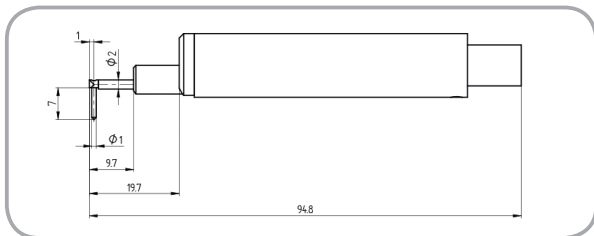
Pickup for TIME[®] 323X



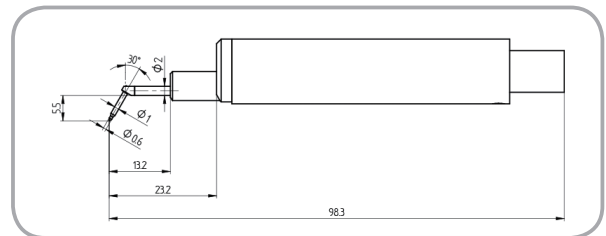
TIME S230 standard pickup



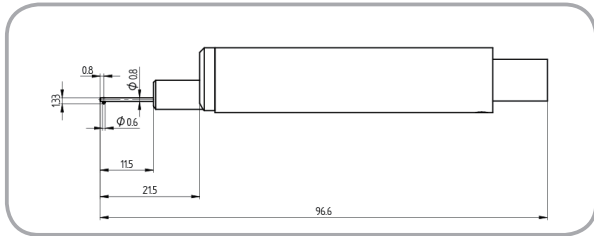
TIME S230V pickup



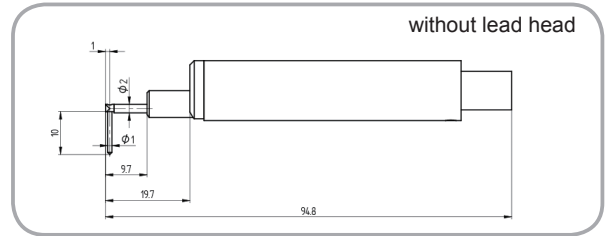
TIME S230U pickup



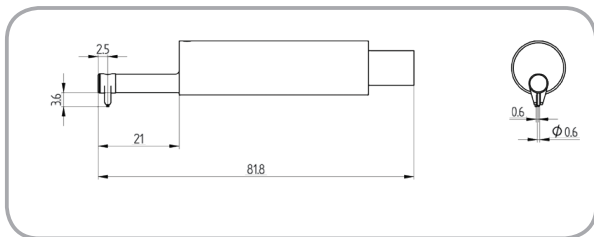
TIME S231 pickup for tooth surface



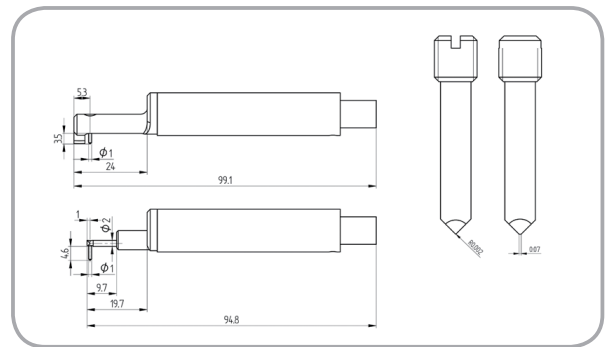
TIME S232 pickup for small hole



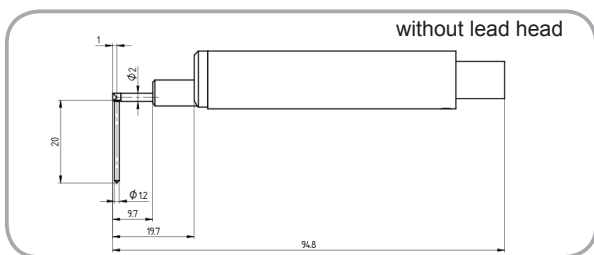
TIME S233 pickup for deep groove



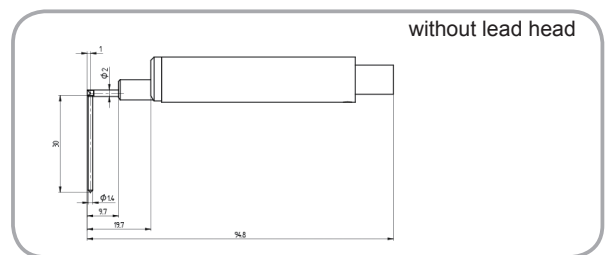
TIME S234 pickup for curved surface



TIME S235 pickup for axe-cutter



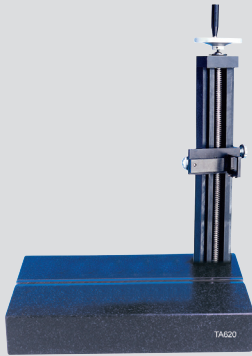
TIME S236 pickup for extra deep groove



TIME S238 pickup for super deep groove

MEASURING PLATFORM

TA620



Specifications:

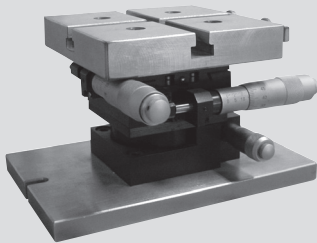
Dimensions: 400 mm×250 mm×70 mm

Y-axial range: 300mm±1mm

Features:

Elevating the table through screw, and V shape groove is available, it is suitable for testing tiny workpiece to improve the accuracy

TA630



Specifications:

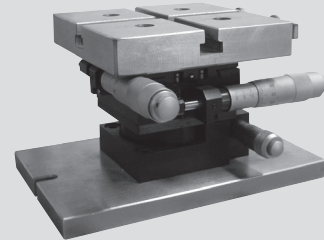
X-axial range:±12.5mm;

Y-axial range:±12.5mm;

Rotation: coarse adjustment 360°, fine adjustment ±5°;

Pitching: 0° ~ 5°.

TA631



Specifications:

X-axial range:±12.5mm;

Y-axial range:±12.5mm;

Rotation: Coarse adjustment 360°, fine adjustment: ±5°.

TA650



Specifications :

Y-axial range: 300 ± 1 mm

The dimension of measuring platform: 600mm×420 mm×80mm

Adjusting range of leveling table

X-axial direction: ±12.5 mm

Y-axial direction: ±12.5 mm

Rotation: 360°; fine adjustment: ±5°

Pitching: 0° ~ 5°

Applications for TIME[®] 323X

